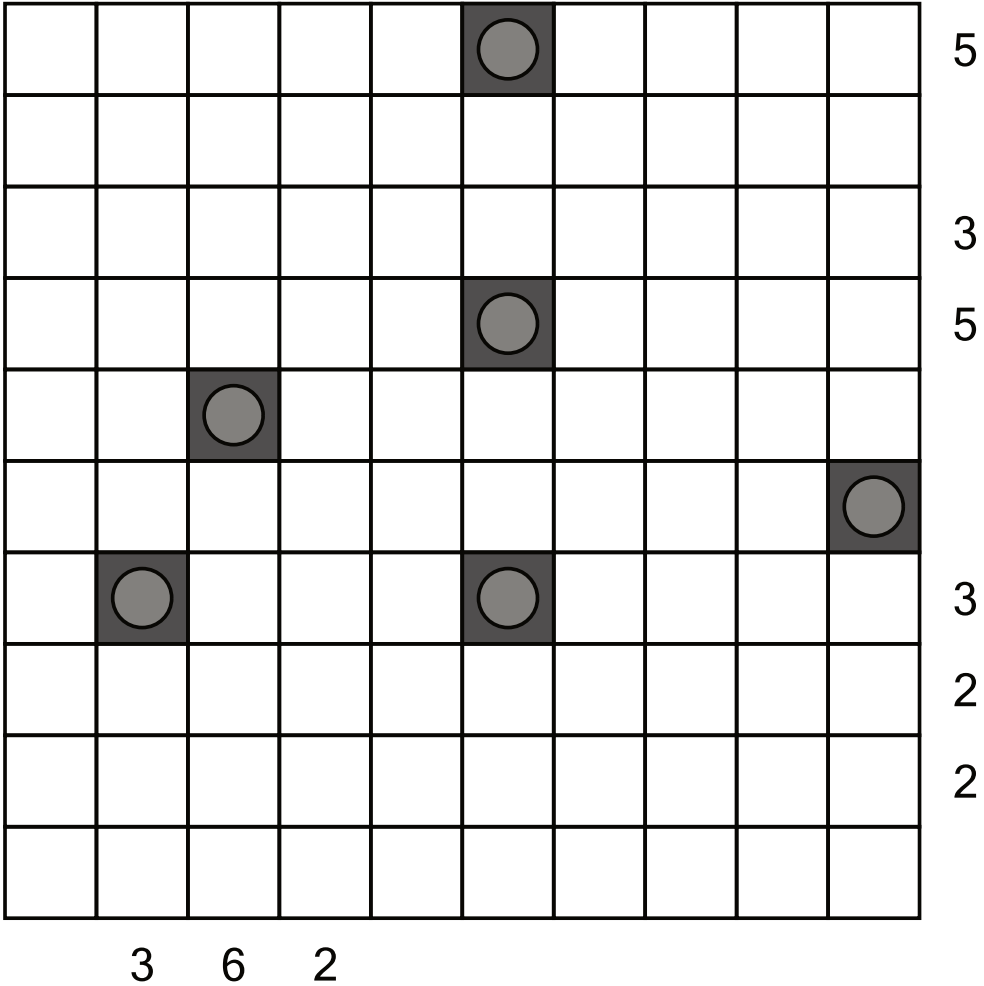


MULTIPLE SNAKES

There are multiple snakes in the grid and the heads and tails of all the snakes are marked.

The task is to shade certain cells to draw lines ("snakes") between the marked cells; the snakes cannot touch each other, not even diagonally.

Numbers given outside the grid indicate how many cells must be shaded black in the corresponding row or column.



MSNK-5-005P; © SortedPuzzles