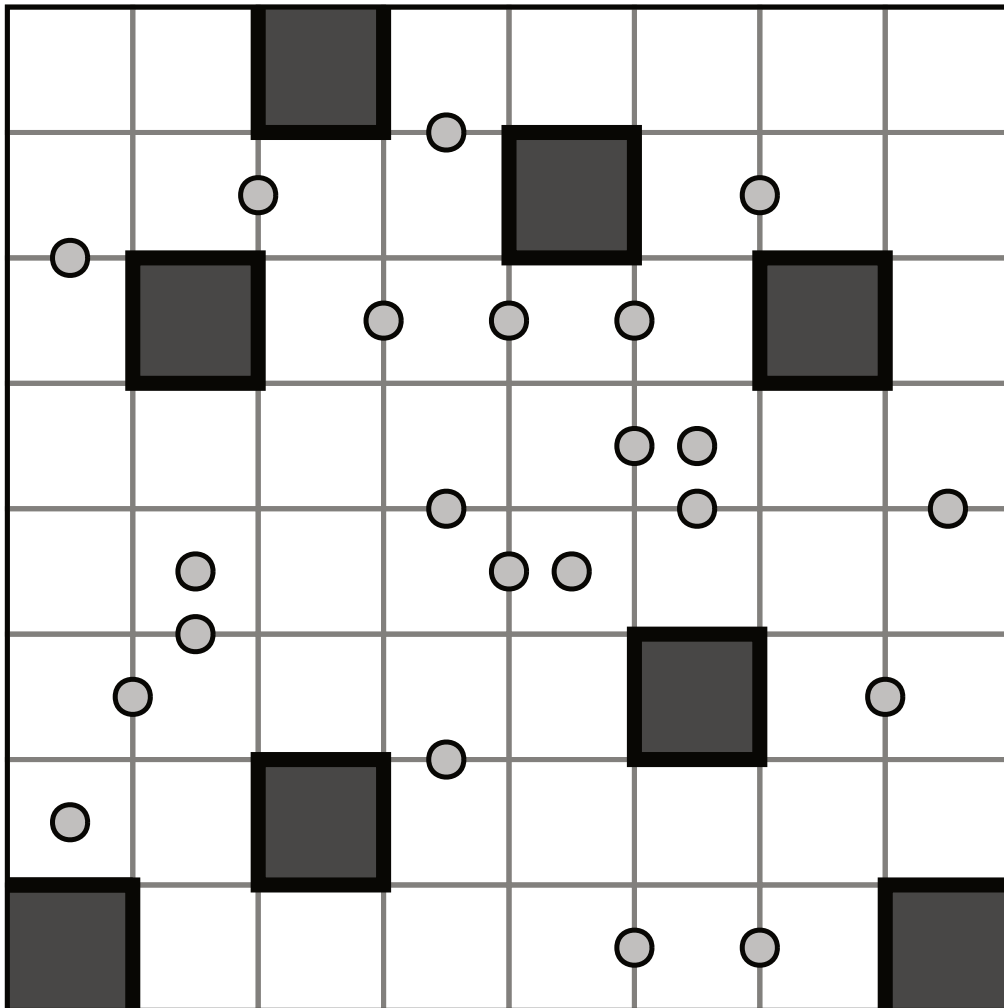


## UNIQUE MARKER

The puzzle grid has several dots that are placed either in the center of cells or on the border between neighbouring cells.

Divide the grid into regions of exactly four cells (tetrominoes) such that each region contains exactly one dot either in the center of a cell or on a border between cells of that tetromino. Dots on borders between regions can be ignored. Black cells do not belong to any region.



UNMA-5-005P; © SortedPuzzles